



Hôpitaux Universitaires
La Pitié Salpêtrière - Charles Foix

Geriatric University Hospital **Charles Foix**



ASSISTANCE
PUBLIQUE  HÔPITAUX
DE PARIS

Diagnosing, exploring and managing aging-associated pathologies



The hospital of Ivry was built during the Second Empire, from 1864 to 1870, by Theodore Labrouste. It was named Charles Foix in 1974, in memory of an eminent neurologist who had practised there during the 20's.

Charles Foix Hospital is specialized in elderly care

It hosts the elderly whatever their pathologies, their level of dependence or social background. Geriatricians, within multidisciplinary teams, manage and treat the patients :

- in consultations or day hospital ;
- in traditional hospitalisation (acute care, post-op and rehabilitation care, long-term care).

Charles Foix Hospital : a geriatric expertise

The hospital promotes out-patient management and early return to the patients' home after hospitalisation.

It promotes short stays, post-op and rehabilitation units, consultations and specialized check-ups for the elderly.

As part of a network, the hospital offers its services to the elderly living close by and to those who are hospitalized in La Pitié-Salpêtrière, to which Charles Foix is attached.

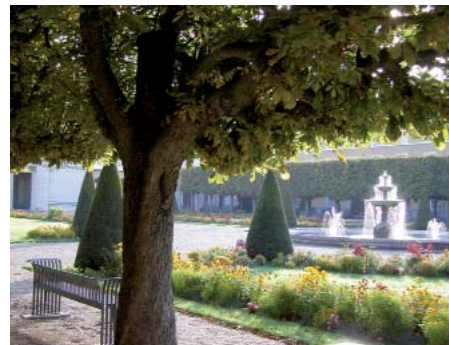
Charles Foix Hospital provides care for people living in the Val-de-Marne cities established west from the Seine and south from Paris until Orly. It is part of the geriatric network 94-2 and its territory extends across the CLIC 7 cities (Ivry-sur-Seine, Cachan, Vitry-sur-Seine, Villejuif, Kremlin-Bicêtre, Gentilly, l'Hay-les-Roses and Fresnes).

Charles Foix Hospital : a leader in the management of ageing related pathologies

Thanks to the training and research policy promoted by the medical teams, the hospital has become increasingly attractive to graduates, students and researchers.

It is devoted to academic teaching, clinical and preclinical research (Longevity Institute) and technological transfers and valorisation (Increase of Life Expectancy pole and cluster of companies SOLIAGE).

It is associated with the Pierre et Marie Curie Faculty of Medicine within the **Pierre et Marie Curie University**.



An exceptional place

Walking through Charles Foix Hospital, you can admire the old buildings, the flowered gardens, the fountains, the galleries and the chapel.

Exhibitions and musical concerts are regularly hosted there.

Charles Foix Hospital expands its connections with private practices, extra-hospital practitioners and medico-social networks.

It re-focuses its activities on acute care and post-op and rehabilitation care.

Moreover, it develops partnerships with retirement homes and adult residential facilities within the Val-de-Marne department.

Thus, the hospital plays a leading role in the training of their teams (nurses, physiotherapists, medico-technical staff) and shares its know-how to reinforce their skills.

75% of the 152 beds of the Orangery, EHPAD (Housing facility for the dependent elderly) built on the site of the hospital and managed by an associative operator, are reserved for the the patients of Charles Foix.



Medical and medico-technical activities of Charles Foix Hospital



The gériatric Paris - Val-de-Marne center

Geriatric psychiatry excluded, out-patient management, polyvalent geriatric hospitalisation, specialized hospitalisation and palliative care are gathered within one single medical cluster.

Out-patient management

■ Consultation and checks-ups centre in day hospital

- global gerontological evaluations centred on geriatrics and complex medico-psychosocial situations in day hospital :
 - . "memory consultation" (exploration and management of cognitive disorders)
 - . consultation dedicated to falls, walking and balance disorders
- specialized consultations completing the geriatric evaluation : ENT, ophthalmology, haematology/oncology, pneumology, anti-pain consultation
- therapeutic education programs for the elderly and their informal caregivers about :
 - . anticoagulant treatments
 - . ending a benzodiazepines treatment
 - . decompensation prevention and follow-up of heart failure
 - . Alzheimer disease and related disorders
- psychiatric consultations of the elderly.

■ Day hospital management

- haematology/oncology, psychiatry ;
- therapeutic geriatric day hospital.

Hospitalization

■ Polyvalent geriatrics

- geriatric short stay units ;
- geriatric post-op and rehabilitation units 1 and 2 ;
- long-term care department and relationships with EHPAD.

■ Specialized geriatrics

Dependent and/or poly-pathological elderly people are treated in geriatric units working in network with the appropriate specialties.

- geriatrics units specialized in haematology/oncology
- geriatrics units specialized in cardiology and neuropsychogeriatrics
- geriatrics palliative care centre
- ortho-geriatric post-op and rehabilitation units
- geriatric psychiatry units.



Those activities are attached to La Pitié-Salpêtrière's poles.

Medico-technical equipment

- 1 osteo densitometer
- 1 scanner
- 40 dental chairs

Radiology

Digital radiology, bone radiography, digestive and urological examination - Ultrasounds (except for pregnancy and arterial ultrasounds) - Osteo densitometer scanner with corporal composition measurement.

Functional explorations

Examinations to diagnose and treat cardiopathy, epilepsies, sleeping disorders, cognitive disorders related to neurodegenerative diseases : neurophysiology, neuropsychological check-up, sleep, cardiovascular explorations.

Dentistry

Traditional dental care, jaw conditions, face muscles and orofacial pain treatment, gum treatment, oral surgery... but also prevention, cosmetic dentistry, implantology, mouth dermatology (open to all).

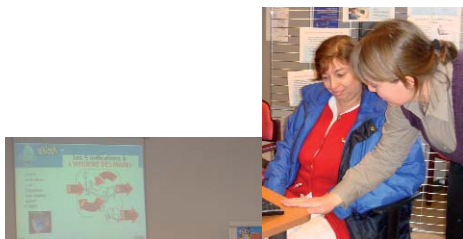
Lab

Analyses are handled in La Pitié-Salpêtrière except for microbiology and urgent analyses which are handled in Charles Foix..

Pharmacy



A leading hospital in academic teaching, research and innovation



With the Pierre et Marie Curie University, the oral surgery faculty of the René Descartes University, the other universities of Ile-de-France and the IFSI (Nursing school), the hospital physicians train about a hundred students and interns a year.

Academic teaching

■ In medicine

- DESC (Complementary Specialized Studies Diploma) of geriatrics
- DU (University Degree) of gerontology, geriatric psychiatry, Alzheimer and related disorders, therapeutic education in geriatrics, coordinating physician in EHPAD
- DIU (Interuniversity degree) of gerontechnology (Health and Autonomy), cardiovascular medicine of the elderly, nutrition of the elderly, infectious diseases of the elderly, medical therapeutics and drugs for the elderly.
- Master 1 and 2 : Biology of ageing and longevity (UPMC)
- Master 2: expertise in gerontology (UPMC).

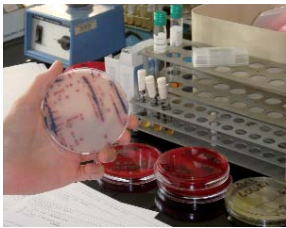
■ In dentistry

The hospital offers trainings to specialize in a given field :

- DESCB (Specialized Studies in Oral Surgery Degree)
- CECSMO (Special Clinical Studies Certificate - Mention Orthodontics)
- University degree of periodontology, geriatric dentistry, orofacial pain, sedation, paediatric dentistry.
- Professional Master

The hospital also offers LMD (Licence, Masters, PhD) internships (especially in biology) and facilitates nursing research.

For more information, see :
seformeralageriatrie.org



The Pierre et Marie Curie University, the AP-HP and the territorial authorities undertake efforts to enhance research, teaching and valorisation of gerontology.

Research

The Pierre et Marie Curie University, the AP-HP and the territorial authorities undertake efforts to enhance research, teaching and valorisation of gerontology

With the "Increase of Life Expectancy" medical cluster and the Longevity Institute, pre-clinical and clinical research are linked to facilitate the application of research findings to the elderly patients.

The Research and Development Centre includes a resources centre and a specialised research centre which academic labs, industrials and start-ups from Ile-de-France can utilize. It consists of a laboratory animal facility and several labs including a platform of sophisticated nervous system functional analyses. These state-of-the-art facilities are very well equipped.

The hospital is also engaged in the research of innovating solutions to improve the autonomy of the elderly. It supports the gerontechnology with the cluster of companies **SOLIAGE**.

The focus of the **Clinical Investigation Centre (CIC)** sub-branch "Paris Est" will be the research on the elderly

therapeutics. It will be the first CIC dedicated to the elderly in France.

Finally, **the hospital's academic department "FAST"** (Fight Against Ageing and STress) gathers numerous medical and research teams from the Pierre et Marie Curie University to work on fighting against ageing and anxiety disorders.

It aims at enhancing research, improving quality of care and ensuring a faster implementation of innovations due to quality teaching.

Sharing moments together



Fostering shared experiences to combat isolation and ensure the patients' well-being

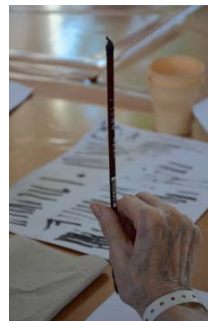
Charles Foix Hospital carries out actions to combat elderly persons' isolation and improve their daily life experiences.

With the help of staff members, families and volunteer associations :

- it **guarantees** the patients are well informed and facilitates their progressive integration ;

- it **brings** into harmony medical and nursing imperatives with the habits, rhythms and desires of the elderly ;

- it **develops** cultural actions, psychosociotherapeutic activities and leisure, communication with the outside world and conviviality.



Renovations

Noteworthy renovation works brought improvement in patients' confort and staff members' working conditions (single rooms with private bathroom, nursing stations, reception rooms...).

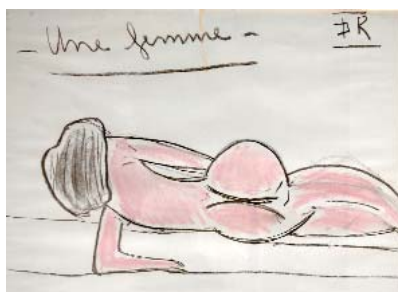
An exceptional collection

of the residents' artworks



By creating the first painting workshops in 1977, Charles Foix Hospital became a pioneer. It committed to guaranteeing the right of access to culture by officially including it in its project of life in 2007.

As many as 800 artworks (paintings, drawings, sculptures) are maintained and most of them are used to decorate the hospital's hallways, offices and galleries. Exhibitions in other venues are also organised.





Music and plastic arts practice is a fundamental right of the residents. It permits respecting the needs and interests of the patients and showing Charles Foix Hospital's will to humanize the stays of the patients.



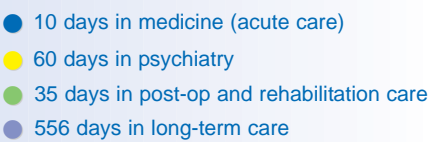
A few key statistics

Charles Foix Hospital's activities

505 beds and places



Average length of stay

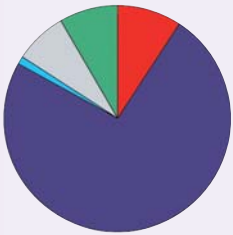


Medico-technical equipments

1 biology lab, 1 radiology unit, 1 functional explorations centre (echocardiography, EEG, holters), 1 osteo densitometer, 1 scanner, 40 dental chairs, 4 fiberscopes

A bit more than 1000 workers

- About a hundred physicians and residents
- About 800 hospital staff members including 25% of nurses
- About 10 socio-educative staff members
- About 80 administrative staff members
- Less than a hundred technical and logistical workers



Other annual key statistics

- 1.3 million meals served
- 184 tons of laundry done
- 43 000 envelops stamped
- 700 tons of household waste treated
- 48 tons of infectious clinical waste treated
- 28 tons of cardboard eliminated

and also ...

- 23 ha. of land
- 100 000 m² of floor
- 38 000 m² washed monthly
- 19 000 m² of windows washed each year
- 5 km of road network maintained monthly
- 36 lifts



Hôpital Charles Foix

7, avenue de la République

94200 Ivry-sur-Seine

01 49 59 40 00

<http://charlesfoix.aphp.fr/>

contact.charlesfoix@cfx.aphp.fr

How to get there

Charles Foix Hospital is 5 minutes away from Paris

■ By car

From Paris : porte d'Ivry
From the highway A14
(suburbs/provinces) : exit 1
Ivry

■ Using Public Transports

métro Mairie d'Ivry and bus
182

■ **RER C** : stop at Vitry station
or Ivry station

